

## INSTALLATION MANUAL UNIMI-1BASE™

### Unimi-1Base™ pre-cast concrete foundation with adaptor for charging stations

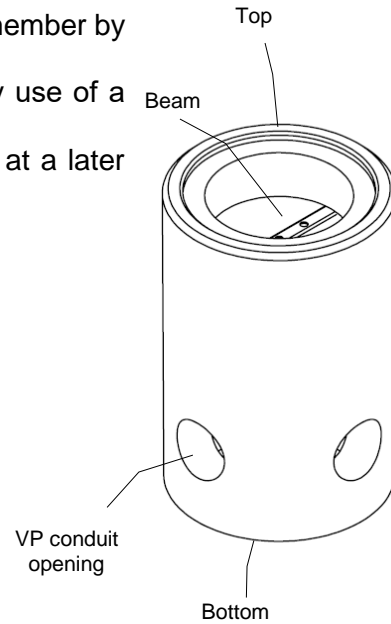


<b>Unimi Solutions</b> <small>Mallens filnamn Produktbeskrivning.doc</small>	<small>Kap</small> -	<small>Kostnb.</small> <b>K00717</b>	<small>Dok namn</small> <b>Installation description</b>			
	<small>Dok dat</small> -	<small>Current filename</small>	<small>Valid from</small> 2014-02-06	<small>Rev</small> 02	<small>Approved</small> 2014-02-06	<small>Sid</small> 1 (5)

## INSTALLATION MANUAL UNIMI-1BASE™

- The Unimi-1Base™ foundation member is designed for anchoring of EV charging stations. The foundation member is placed in the ground so that the top is aligned to the existing/targeted ground level<sup>\*)</sup>. The EV charging station is attached to the foundation member by use of a designated adaptor, or is made “dormant” by use of a cover member if the charging station will be mounted at a later stage.

- Weight: ca 100 kg / 220 lb
- Hight: ca 600 mm / 24 in
- Outer diameter: 400 + 2 mm / 16 in



- Pull VP pipes for cable/cable thread to the site.
- Dig a hole to fit the foundation. If you are in a cold climate zone, make sure to prepare the bed for frost/freezing, i.e. gravel. Adjust the depth of the hole so that the foundation’s top will be in level with the surrounding ground/pavement<sup>\*)</sup>.
- Use the provided VP-covers for those holes on the foundation sides that will not be in use.

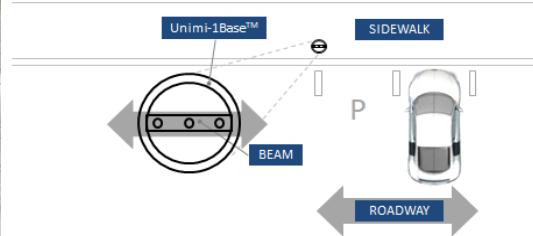
<sup>\*)</sup> If Unimi-1base crash protections are to be installed as shown in picture on page 1, installation should be done so that the fastening screws of the two protection poles are above ground level. This is to accommodate later replacement of damaged poles

<b>Unimi Solutions</b> <small>Mallens filnamn</small> Produktbeskrivning.doc	<small>Kap</small> -	<small>Kostnb.</small> <b>K00717</b>	<small>Dok namn</small> <b>Installation description</b>				
	<small>Dok dat</small> -	<small>Current filename</small>	<small>Valid from</small> 2014-02-06	<small>Rev</small> 02	<small>Approved</small> 2014-02-06	<small>Sid</small> 2 (5)	

## INSTALLATION MANUAL UNIMI-1BASE™



Orientation of the foundation member and metal beam  
[view from above]

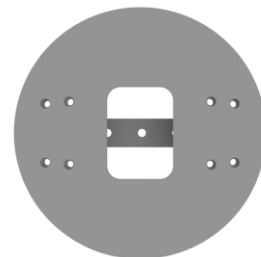
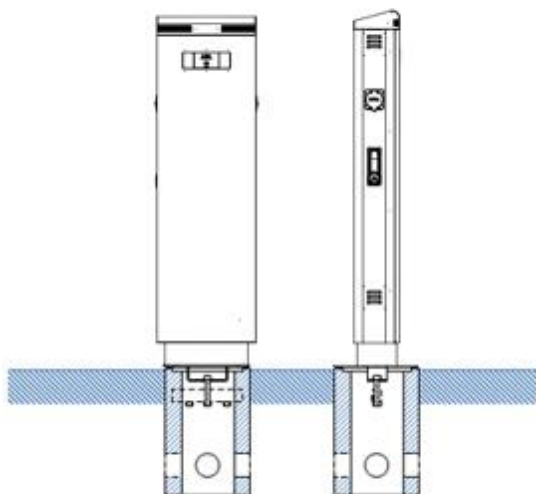
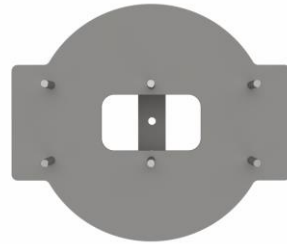
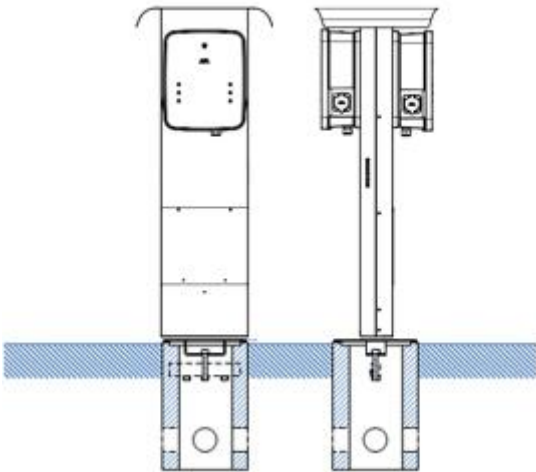
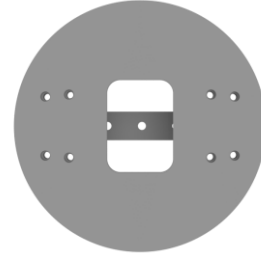
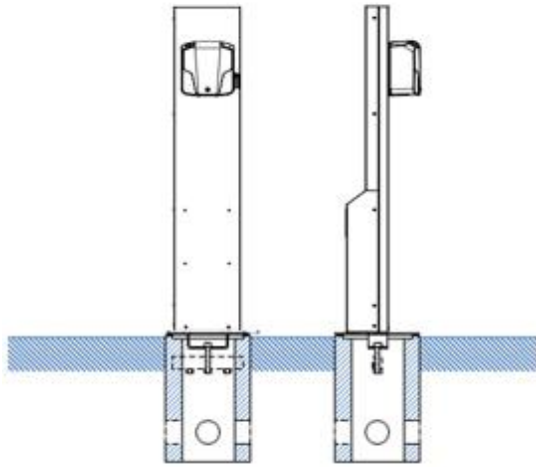


- Lower the foundation into the hole – the beam can be used for lifting. The foundation shall be upright and perpendicular. Rotate the foundation so that the beam is oriented parallel to the curbside/street/parking. The patented design makes it possible to adjust the charging poles orientation using the adaptor element.
- Attach VP pipes with cables/thread to the side of the foundation member. Specific protection can be installed according to the figures at the end of this document.
- Mount the adaptor to the foundation member inside beam using the 12 mm bolt and washer accompanying the adaptor (\*\*)
- Mount the charging station by fitting the charger bottom plate to match with the Unimi adaptor plate.
- For examples of adaptor plates and mounting of poles see next page.

**\*\*)** Ensure that foundation rim is clear of any small gravel that may cause adaptor to wiggle. Max torque on center screw is 18 Nm on the standard non reinforced 6 mm bracket of the adaptor.

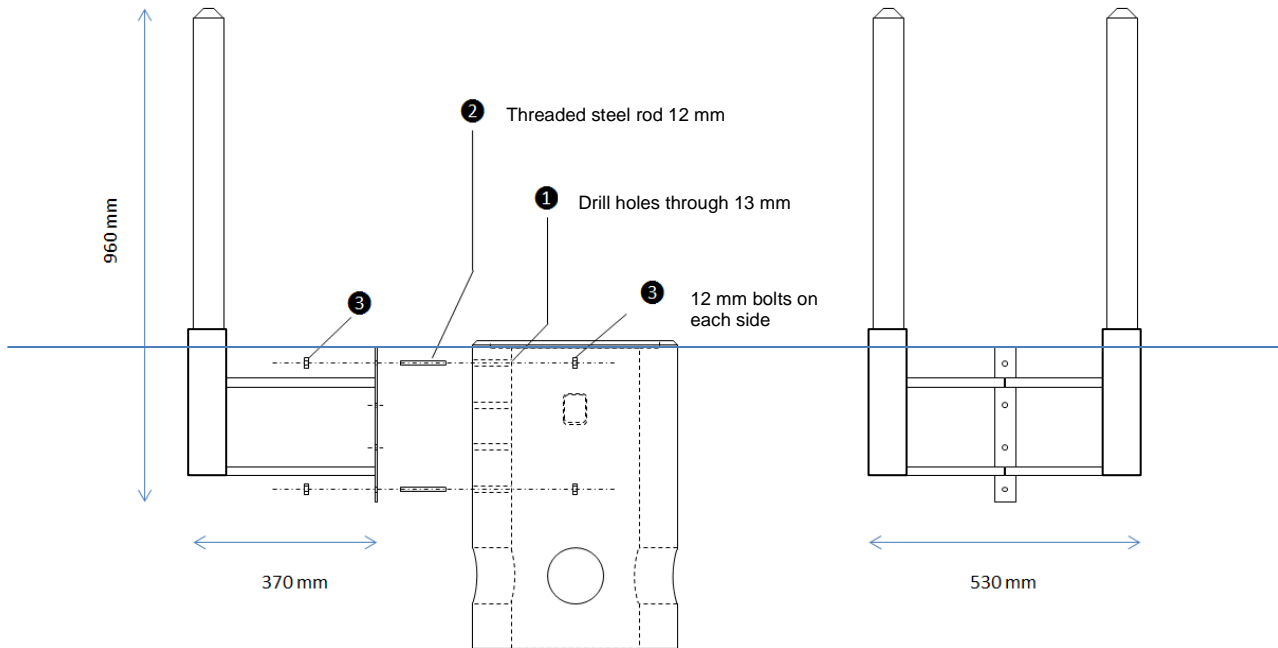
<b>Unimi Solutions</b>	Kap -	Kostnb. <b>K00717</b>	Dok namn <b>Installation description</b>				
Mallens filnamn Produktbeskrivning.doc	Dok dat -	Current filename	Valid from 2014-02-06	Rev 02	Approved 2014-02-06	Sid 3 (5)	

## INSTALLATION MANUAL UNIMI-1BASE™



<b>Unimi Solutions</b> <small>Mallens filnamn Produktbeskrivning.doc</small>	<small>Kap</small> -	<small>Kostnb.</small> <b>K00717</b>	<small>Dok namn</small> <b>Installation description</b>			
	<small>Dok dat</small> -	<small>Current filename</small>	<small>Valid from</small> 2014-02-06	<small>Rev</small> 02	<small>Approved</small> 2014-02-06	<small>Sid</small> 4 (5)

## INSTALLATION MANUAL UNIMI-1BASE™



### Requirements for personal safety

- Pre-cast foundation member must be lifted in place using a vehicle. Use the beam to attach lifting devices.

<b>Unimi Solutions</b> <small>Mallens filnamn Produktbeskrivning.doc</small>	<small>Kap</small> -	<small>Kostnb.</small> <b>K00717</b>	<small>Dok namn</small> <b>Installation description</b>				
	<small>Dok dat</small> -	<small>Current filename</small>	<small>Valid from</small> 2014-02-06	<small>Rev</small> 02	<small>Approved</small> 2014-02-06	<small>Sid</small> 5 (5)	